



Heene Terrace, Worthing, BN11 3LQ

Asking Price £325,000

Occupying a prime position within the ever-popular Jason Court on Heene Terrace, this beautifully presented upper floor apartment enjoys truly stunning uninterrupted sea views across Worthing seafront. Offered in excellent condition throughout, the property has been significantly improved by the current owner, including the installation of a stylish new kitchen, creating a superb coastal home ready to move straight into.

The accommodation is both bright and spacious, comprising two generous double bedrooms, a modern shower room and an impressive open plan lounge/kitchen/dining room with large sash windows framing the exceptional sea views. The living space offers an ideal setting for both relaxing and entertaining, with the newly fitted kitchen complementing the room perfectly.

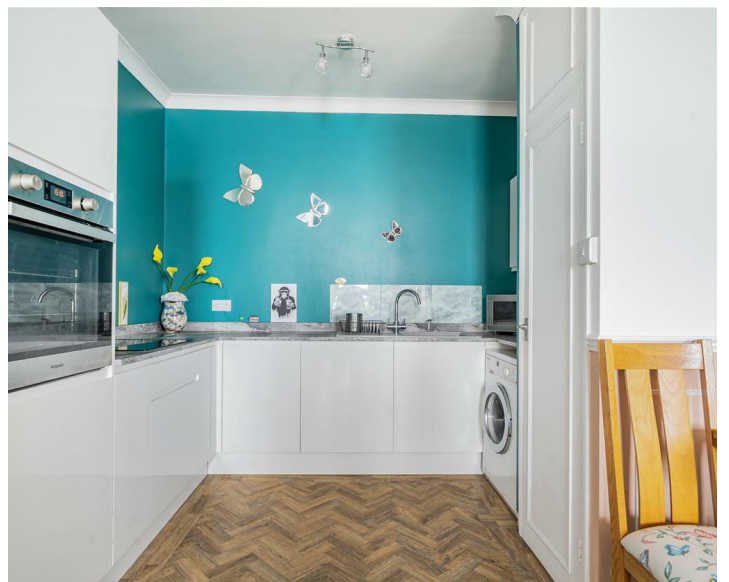
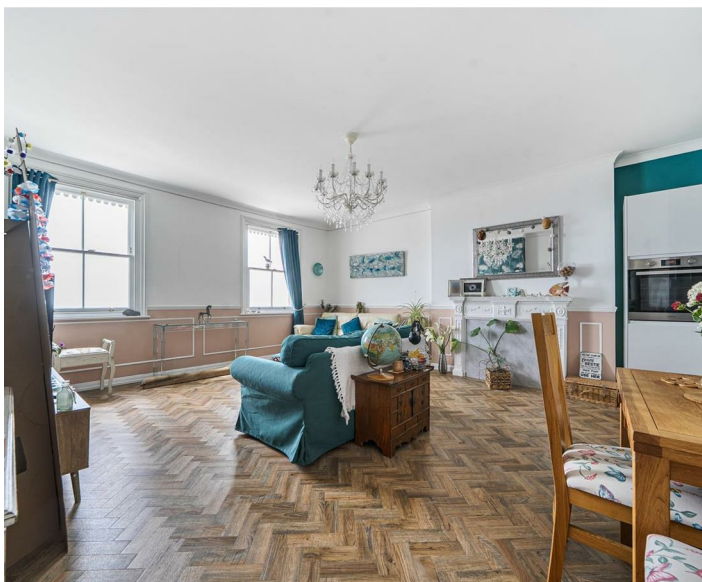
Further benefits include a share of the freehold, a long lease, communal lift access.



Council Tax Band: A

- Stunning uninterrupted direct sea views
- Stylish newly fitted modern kitchen
- Two generous double bedrooms throughout
- Share of freehold and long lease
- Share of Freehold with remainder of 999 year lease

- Beautifully refurbished throughout internally
- Spacious open plan living accommodation
- Upper floor apartment with lift
- Modern fitted shower room suite
- Service and Maintenance Charge: Approximately £3200.00 per annum



Worthing, a charming seaside town on the south coast of England, strikes a balance between Victorian elegance and contemporary energy. Its extensive pebble beach, historic pier and scenic promenade make for a quintessential coastal experience. A thriving cultural scene, including theatres, galleries and local events, brings vibrancy to the town. With lush green spaces such as Beach House Park and Highdown Gardens, plus a bustling town centre full of shops, restaurants and entertainment, Worthing is a well-connected, welcoming community with a rich history and enduring appeal.



EPC Rating:

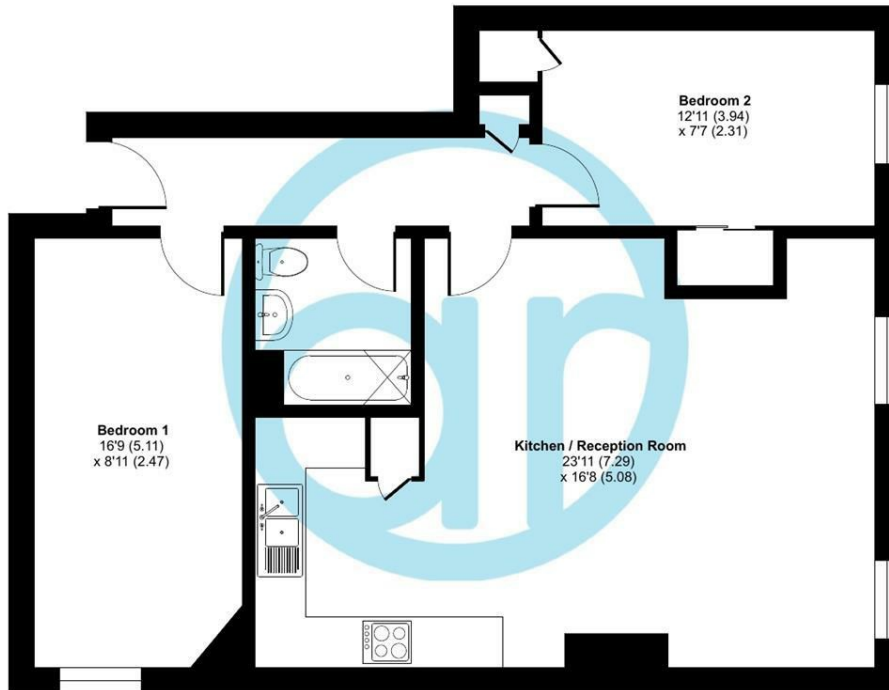
F

Energy Efficiency Rating		Current	Potential
Very energy efficient - lower running costs			
(92 plus) A			
(81-91) B			
(69-80) C			76
(55-68) D			
(39-54) E			
(21-38) F		37	
(1-20) G			
Not energy efficient - higher running costs			
England & Wales		EU Directive 2002/91/EC	

Jason Court, Heene Terrace, Worthing, BN11

Approximate Area = 725 sq ft / 67.3 sq m

For identification only - Not to scale



THIRD FLOOR

 Floor plan produced in accordance with RICS Property Measurement Standards incorporating International Property Measurement Standards (IPMS2 Residential). © nichecom 2026. Produced for Aspire Residential Real Estate. REF: 1455559

Aspire Residential | Goring-by-Sea

28 Goring Road

Goring-by-Sea

Worthing

BN12 4AD

Telephone: 01903 259 961

Email: info@aspireresidential.co.uk



Aspire Residential | Durrington / Salvington

5 Selden Parade

Salvington Road

Worthing

BN13 2HL

Telephone: 01903 910 424

Email: enquiries@aspireresidential.co.uk

Aspire Residential and Aspire Residential Estate Agents are trading names of Aspire Residential Real Estate Limited, a Company registered in England and Wales with registration number 11512783. VAT No. 305 0761 37

IMPORTANT NOTICE TO PURCHASERS: We endeavour to make our sales particulars accurate and reliable, however, they do not constitute or form part of an offer or any contract and none is to be relied upon as statements of representation or fact. The services, systems and appliances listed in this specification have not been tested by us and no guarantees as to their operating ability or efficiency are given. All measurements have been taken as a guide to prospective buyers only, and are not precise. If you require clarification or further information on any points, please contact us, especially if you are traveling some distance to view.