

## Grand Avenue, Worthing, BN11 5AL

£184,950

This modern one bedroom top floor flat, situated on Worthing's popular seafront. With a layout that runs from East to West, this property offers sea views from both the lounge and bedroom. Lift access is provided from the entrance foyer. Benefits include a long lease term and modern decoration/fixtures throughout.

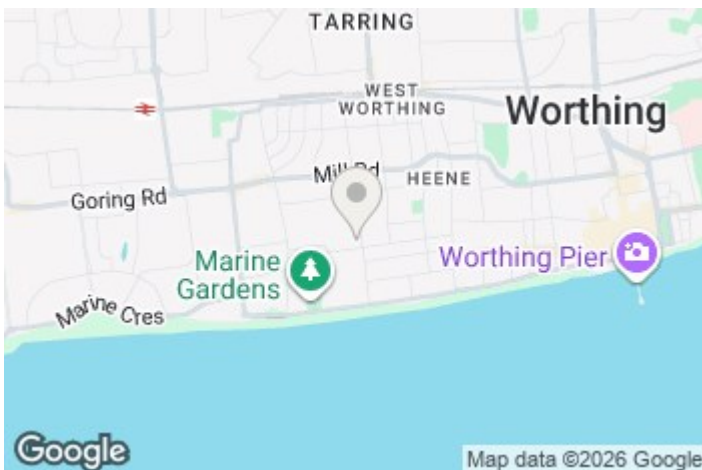
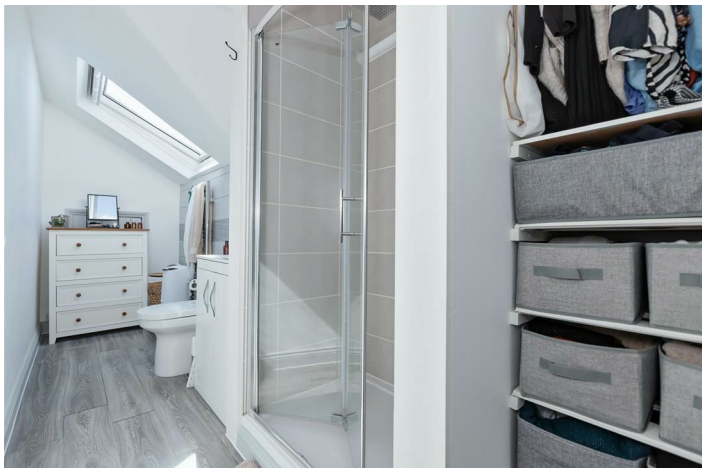


Council Tax Band: A

- Sea views East and West
- Lift access
- Storage room
- EPC - E
- Service Charge - approx. £2800 per annum
- Long lease
- Refitted kitchen
- Neutral decoration
- Non restricted parking
- Leasehold with approx. 134 years remaining



Worthing, a picturesque seaside town on the south coast of England, exudes a unique charm with its blend of Victorian elegance and contemporary vitality. Known for its extensive pebble beach, historic pier, and well-maintained promenade, Worthing offers residents and visitors alike a captivating coastal experience. The town's vibrant cultural scene is enriched by theatres, art galleries, and frequent events, creating a lively atmosphere. With its beautiful parks, such as Beach House Park and Highdown Gardens, Worthing provides green spaces for leisure and relaxation. The town's bustling town centre features a diverse array of shops, restaurants, and entertainment venues, contributing to its reputation as a welcoming and thriving community. Worthing's accessibility, rich history, and scenic beauty make it a sought-after destination for those seeking a coastal haven with a perfect blend of tradition and modernity.

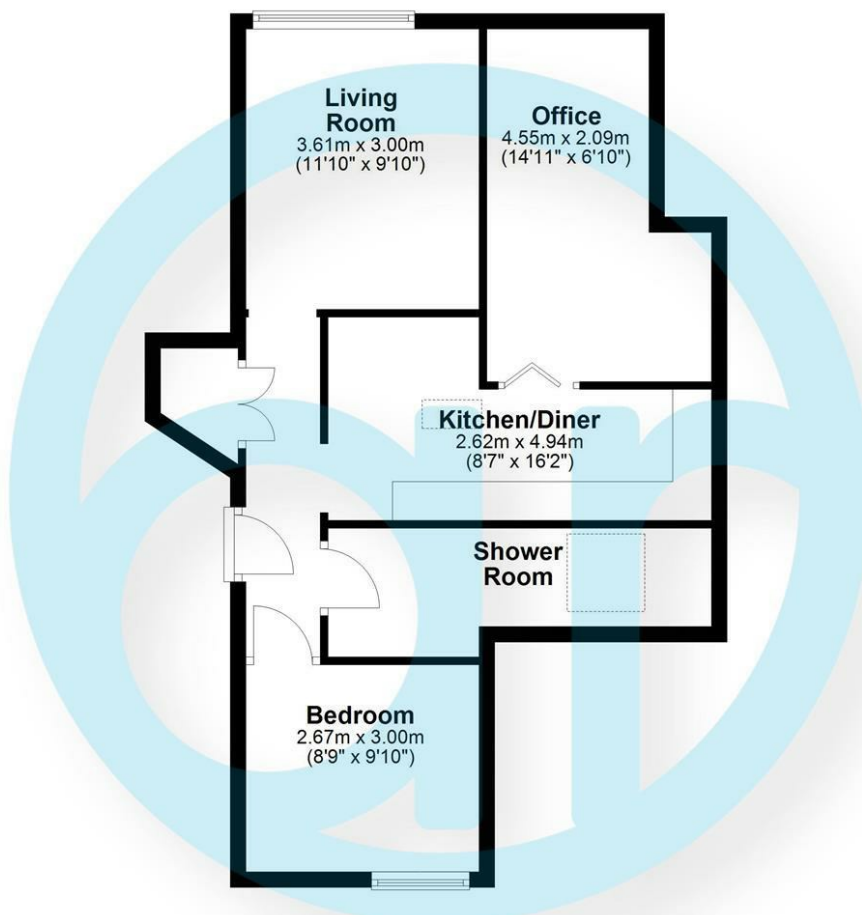


EPC Rating:

Energy Efficiency Rating		Current	Potential
Very energy efficient - lower running costs			
(92 plus) <b>A</b>			
(81-91) <b>B</b>			
(69-80) <b>C</b>			
(55-68) <b>D</b>			
(39-54) <b>E</b>			
(21-38) <b>F</b>			
(1-20) <b>G</b>			
Not energy efficient - higher running costs			
<b>England &amp; Wales</b>		EU Directive 2002/91/EC	

## Floor Plan

Approx. 54.9 sq. metres (591.0 sq. feet)



Total area: approx. 54.9 sq. metres (591.0 sq. feet)

### Aspire Residential | Goring-by-Sea

28 Goring Road  
Goring-by-Sea  
Worthing  
BN12 4AD  
Telephone: 01903 259 961  
Email: [info@aspireresidential.co.uk](mailto:info@aspireresidential.co.uk)



### Aspire Residential | Durrington / Salvington

5 Selden Parade  
Salvington Road  
Worthing  
BN13 2HL  
Telephone: 01903 910 424  
Email: [enquiries@aspireresidential.co.uk](mailto:enquiries@aspireresidential.co.uk)

Aspire Residential and Aspire Residential Estate Agents are trading names of Aspire Residential Real Estate Limited, a Company registered in England and Wales with registration number 11512783. VAT No. 305 0761 37

IMPORTANT NOTICE TO PURCHASERS: We endeavour to make our sales particulars accurate and reliable, however, they do not constitute or form part of an offer or any contract and none is to be relied upon as statements of representation or fact. The services, systems and appliances listed in this specification have not been tested by us and no guarantees as to their operating ability or efficiency are given. All measurements have been taken as a guide to prospective buyers only, and are not precise. If you require clarification or further information on any points, please contact us, especially if you are traveling some distance to view.