



Woodlands Avenue, Littlehampton, BN16 3HB

£1,550 PCM

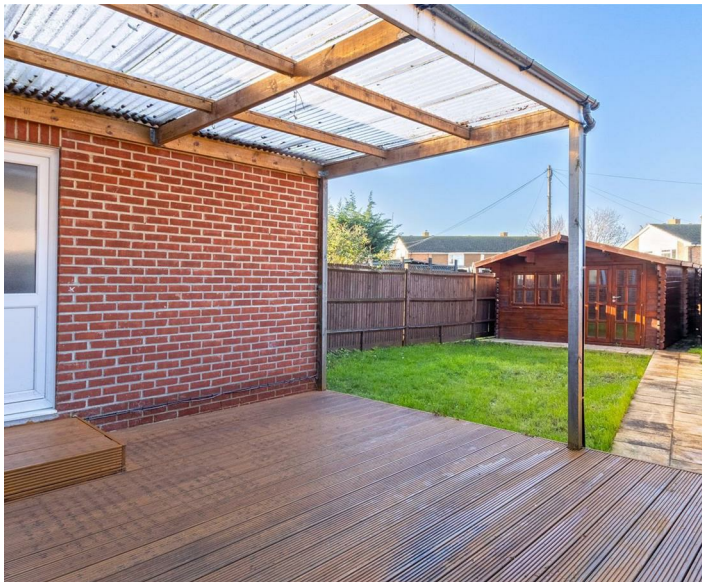
This three bedroom end of terrace property is available to let long term and from the beginning of March. Internally, the property boasts great sized lounge and kitchen/diner, utility room and modern family bath. Upstairs, there is three good sized bedrooms. Externally, there is a generous west facing back garden, with both lawn & decking areas, as well as a large cabin ideal as a work from home space.

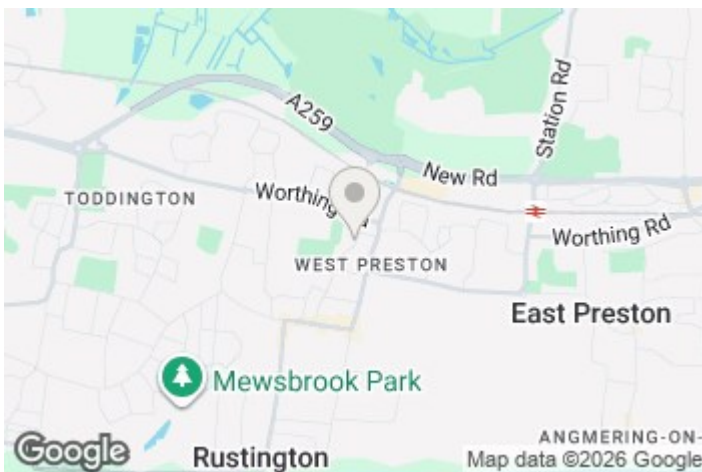


Council Tax Band: C

- Three Bedroom End Of Terrace House
- Good sized Kitchen/Diner & Utility Room
- Close To Transport Links & Rustington Shops

- Available Early March
- External Office/Cabin
- EPC - D



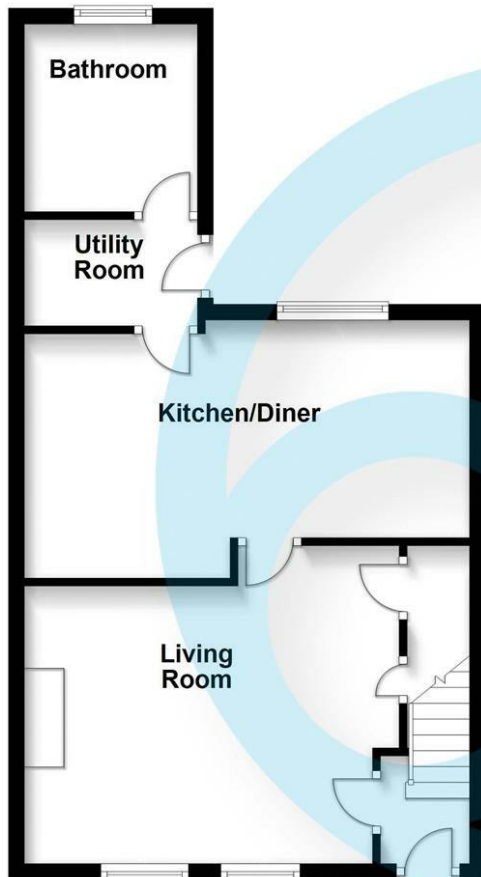


EPC Rating:
D

Energy Efficiency Rating		Current	Potential
Very energy efficient - lower running costs			
(92 plus)	A		
(81-91)	B		
(69-80)	C		
(55-68)	D	68	82
(39-54)	E		
(21-38)	F		
(1-20)	G		
Not energy efficient - higher running costs			
England & Wales		EU Directive 2002/91/EC	

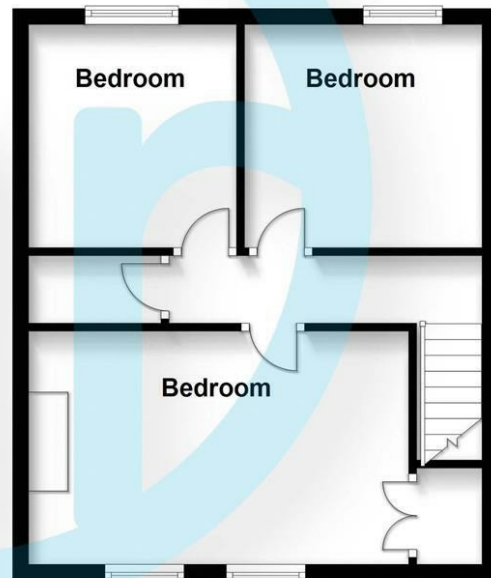
Ground Floor

Approx. 46.9 sq. metres (505.1 sq. feet)



First Floor

Approx. 39.2 sq. metres (421.7 sq. feet)



Total area: approx. 86.1 sq. metres (926.8 sq. feet)

Aspire Residential | Goring-by-Sea

28 Goring Road
Goring-by-Sea
Worthing
BN12 4AD
Telephone: 01903 259 961
Email: info@aspireresidential.co.uk



Aspire Residential | Durrington / Salvington

5 Selden Parade
Salvington Road
Worthing
BN13 2HL
Telephone: 01903 910 424
Email: enquiries@aspireresidential.co.uk

Aspire Residential and Aspire Residential Estate Agents are trading names of Aspire Residential Real Estate Limited, a Company registered in England and Wales with registration number 11512783. VAT No. 305 0761 37

IMPORTANT NOTICE TO PURCHASERS: We endeavour to make our sales particulars accurate and reliable, however, they do not constitute or form part of an offer or any contract and none is to be relied upon as statements of representation or fact. The services, systems and appliances listed in this specification have not been tested by us and no guarantees as to their operating ability or efficiency are given. All measurements have been taken as a guide to prospective buyers only, and are not precise. If you require clarification or further information on any points, please contact us, especially if you are traveling some distance to view.