



Grand Avenue, Lancing, BN15 9QB

£350,000

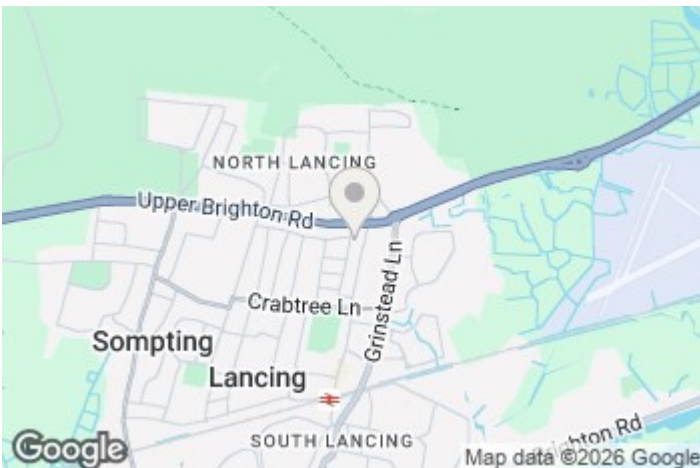
Aspire Residential are delighted to bring to the market this two double bedroom, semi - detached bungalow in popular Lancing. This property offers the potential for development with a large rear garden and ample loft space. Locally, you will find leisure facilities, shops, restaurants and useful transport links, including a mainline train station.

- Being sold with no onward chain
- Generous East facing garden
- Good size garden to the front creating privacy
- Easy access to the A27 & A259
- Catchment area of popular local schools

- Potential to extend to the rear and into the loft (STP)
- Detached single garage to the rear
- Well proportioned double bedrooms
- Close to local shops and amenities
- Convenient for transport links including bus and train



Lancing, a coastal town situated between Worthing and Shoreham-by-Sea, embodies a delightful blend of seaside tranquillity and community spirit. Home to the iconic Lancing College chapel, the town boasts a unique skyline that merges historical charm with modern living. The long pebble beach provides a scenic backdrop, inviting residents to enjoy seaside strolls and breath-taking sunsets. Lancing's town centre offers a mix of local shops, cafes, and amenities, contributing to its warm and welcoming atmosphere. The town's strong sense of community is evident in local events and the availability of recreational spaces like Manor Park. With excellent transportation links and a diverse range of housing options, Lancing stands as a cherished coastal town, offering residents a peaceful yet connected lifestyle on the shores of the English Channel.



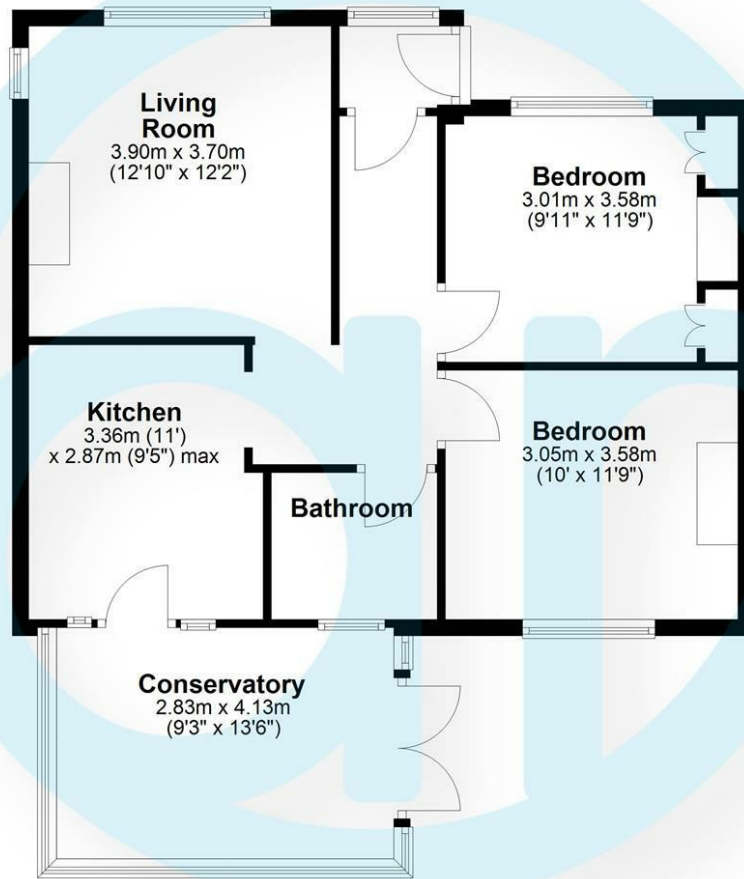
EPC Rating:

D

Energy Efficiency Rating		Current	Potential
Very energy efficient - lower running costs			
(92 plus) A			
(81-91) B			88
(69-80) C			
(55-68) D		67	
(39-54) E			
(21-38) F			
(1-20) G			
Not energy efficient - higher running costs			
England & Wales		EU Directive 2002/91/EC	

## Floor Plan

Approx. 71.2 sq. metres (766.1 sq. feet)



Total area: approx. 71.2 sq. metres (766.1 sq. feet)

### Aspire Residential | Goring-by-Sea

28 Goring Road  
Goring-by-Sea  
Worthing  
BN12 4AD  
Telephone: 01903 259 961  
Email: [info@aspireresidential.co.uk](mailto:info@aspireresidential.co.uk)



### Aspire Residential | Durrington / Salvington

5 Selden Parade  
Salvington Road  
Worthing  
BN13 2HL  
Telephone: 01903 910 424  
Email: [enquiries@aspireresidential.co.uk](mailto:enquiries@aspireresidential.co.uk)

Aspire Residential and Aspire Residential Estate Agents are trading names of Aspire Residential Real Estate Limited, a Company registered in England and Wales with registration number 11512783. VAT No. 305 0761 37

**IMPORTANT NOTICE TO PURCHASERS:** We endeavour to make our sales particulars accurate and reliable, however, they do not constitute or form part of an offer or any contract and none is to be relied upon as statements of representation or fact. The services, systems and appliances listed in this specification have not been tested by us and no guarantees as to their operating ability or efficiency are given. All measurements have been taken as a guide to prospective buyers only, and are not precise. If you require clarification or further information on any points, please contact us, especially if you are traveling some distance to view.